

S.M. Wright Phase II

I-45 and SH 310 Project

*Improving the neighborhood environment,
safety and mobility*

- Transform the existing S.M. Wright Freeway into a six-lane, street-level boulevard with traffic signals.
- Reconfigure the existing interchange between I-45 and SH 310 (S.M. Wright Parkway), Cesar Chavez Boulevard and Good Latimer Expressway.
- Replace freeway overpasses with a street-level boulevard that will include landscaping and sidewalks.



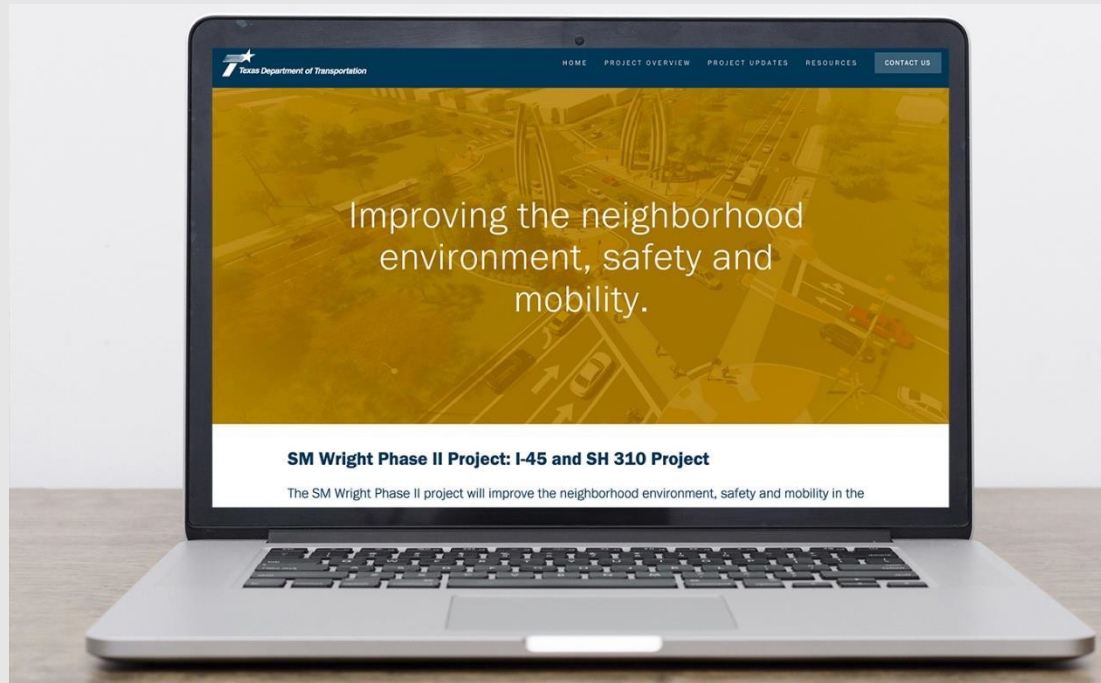
- Enhance community gateways to help promote neighborhood identity and local connections.
- Help spur community investment, development and rejuvenation.
- Improve operability, connections, and mobility between I-45, Al Lipscomb Way and Martin Luther King, Jr. Boulevard.



- Texas Department of Transportation (TxDOT)
- CEI – LTRA Engineers
- Contractor – Johnson Bros. Corporation
- Public Information – K Strategies
- Priority Group – Operational Advisors



- Website
- Phone Line
- Project Email
- Flyers
- Maps and Renderings
- Stakeholder Presentations
- Stakeholder Meetings
- Email Campaigns
- Direct Mailings



S.M. WRIGHT PARKWAY





ELSIE FAYE HEGGINS STREET AND S.M. WRIGHT



PINE STREET AND S.M. WRIGHT



METROPOLITAN AVENUE AND S.M. WRIGHT



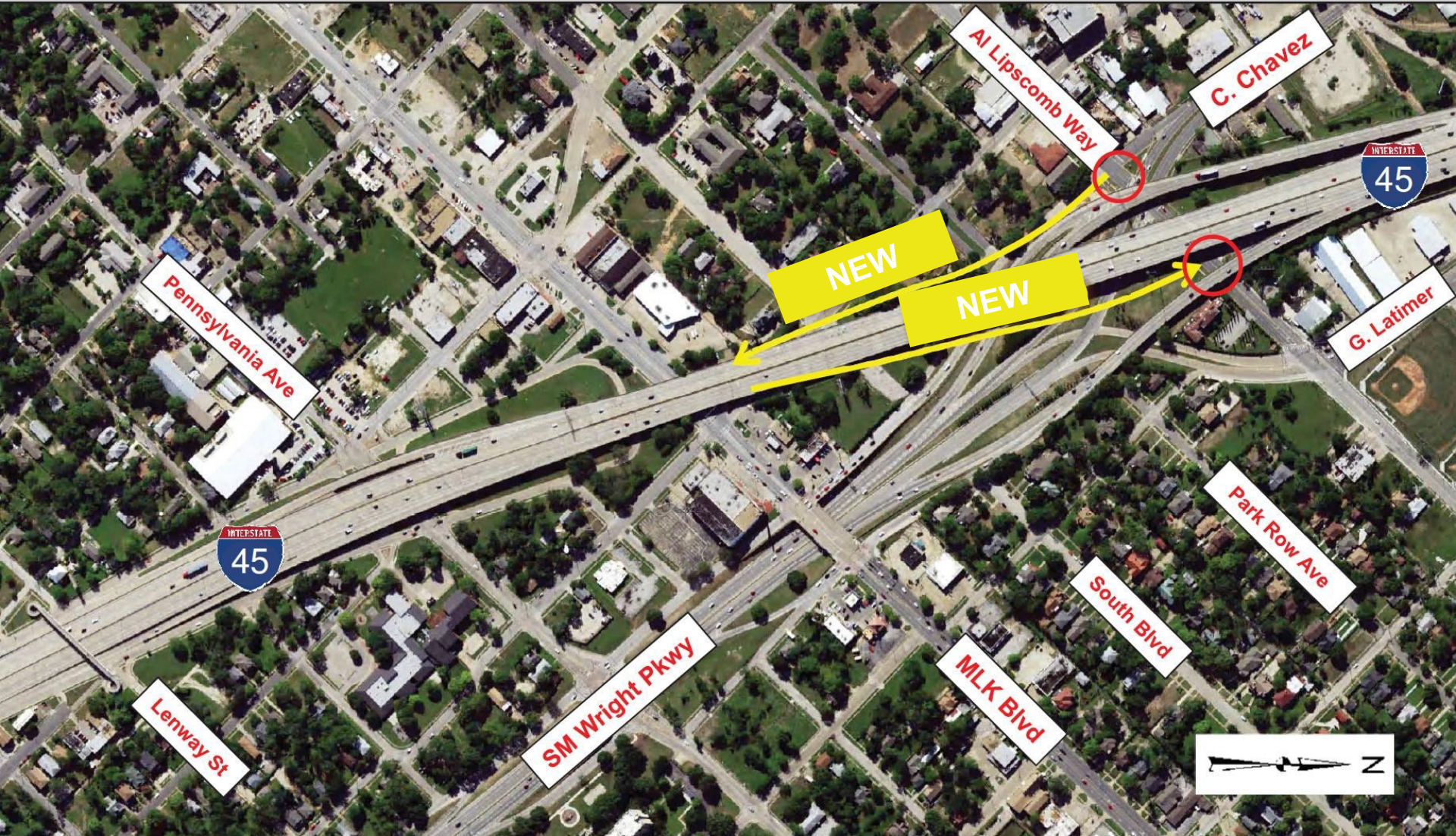
WARREN AVENUE AND S.M. WRIGHT



PENNSYLVANIA AVENUE AND S.M. WRIGHT



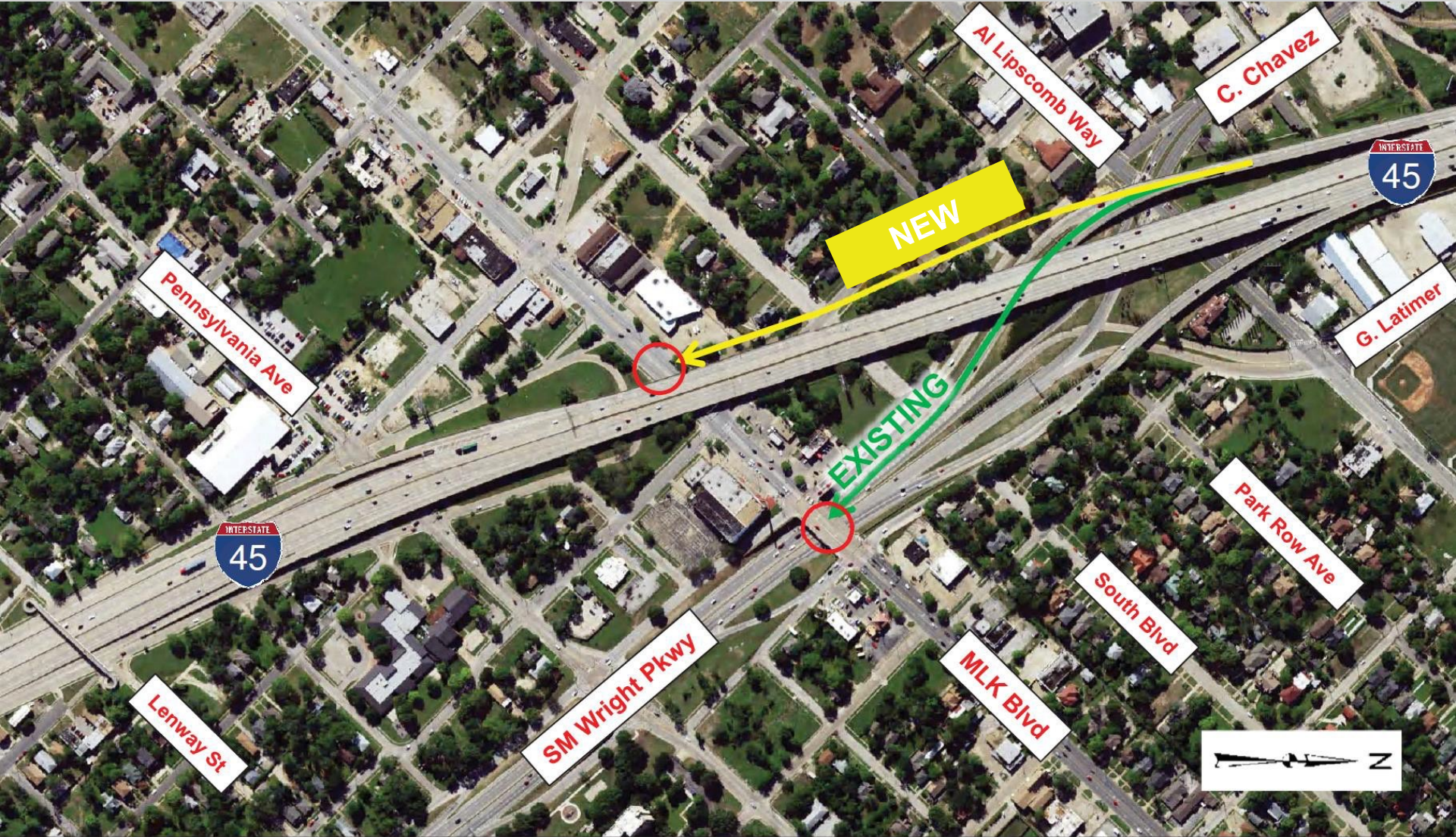
MARTIN LUTHER KING JR BOULEVARD AND S.M. WRIGHT



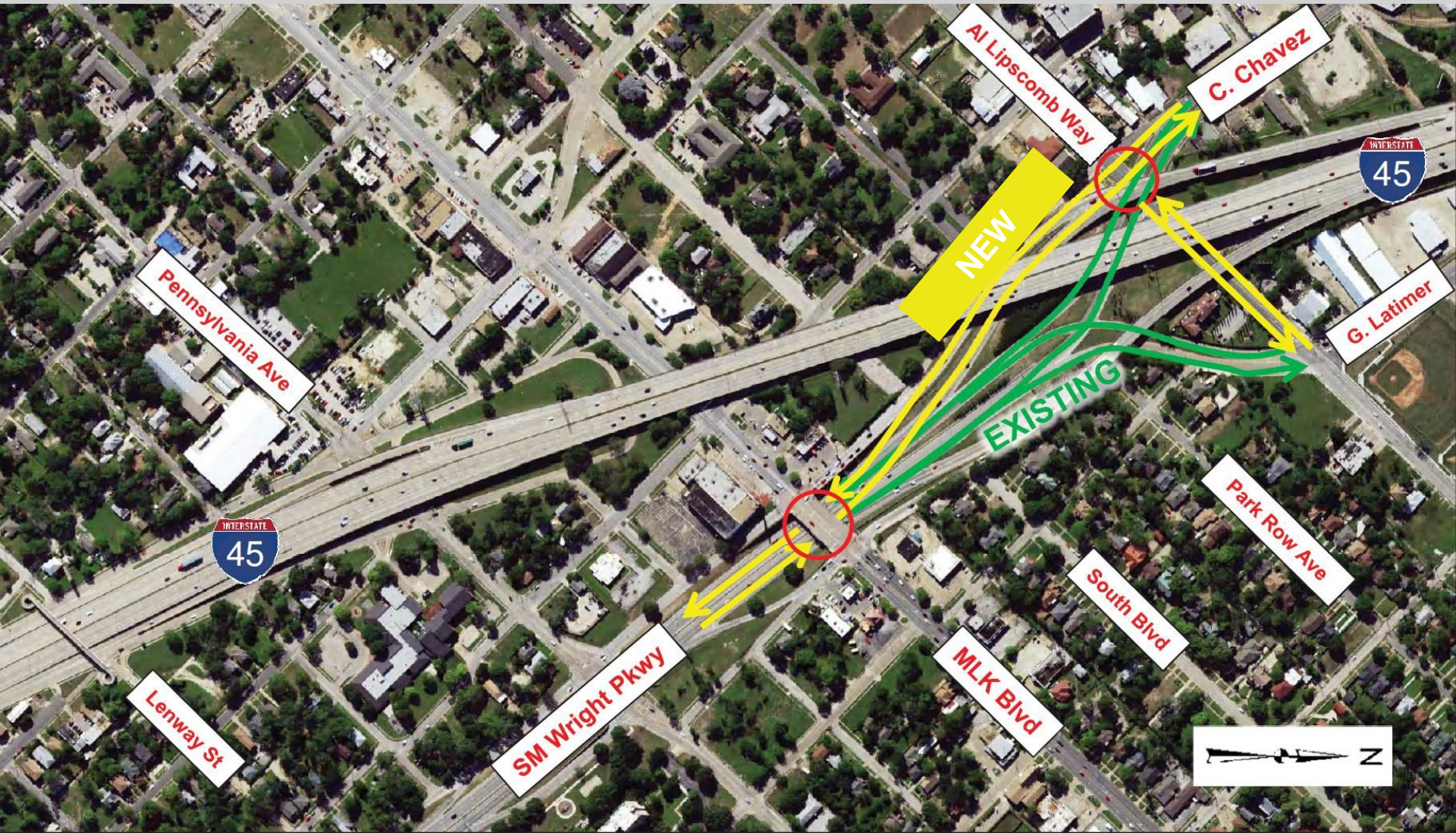
I-45 AND AL LIPSCOMB WAY NB EXIT AND SB ENTRANCE



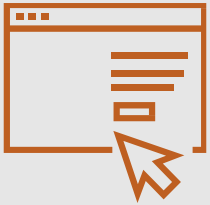
NORTHBOUND ENTRANCE FROM MLK BOULEVARD



SOUTHBOUND EXIT TO MLK BOULEVARD



S.M. WRIGHT CONNECTIONS TO CESAR CHAVEZ AND GOOD LATIMER



Project Website: www.smwrightproject.com

View project information, sign up for email updates, or submit comments.



Project Email: info@smwrightproject.com

Email us questions, comments, or request a virtual presentation.



Project Phone Line: (214) 390-7130

No access to the internet? Call us to ask a question or request to be added to the project mailing list.